

USER MANUAL

HDMI TO HDMI + Audio Decoder

AUDIO EDID SETTING+SPDIF+5.1CH+HP

Model No: HDCN0016M1

Enjoy the vivid world!

REMARK

Manufacturer does not make any commitment to update the information contained herein.

Dear customer

Thank you for purchasing this product. For optimum performance and safety, please read these instructions carefully before connecting, operating or adjusting this product. Please keep this manual for future reference.

The products are designed to make your A/V device use more convenient, comfortable, productive and cost-efficient.

The HDMI TO HDMI Audio Decoder allows you to extract audio signals from your HDMI source. You can take your original HDMI audio signal and convert it to digital optical or analog 5.1 sound track output. This product supports Dolby digital AC-3, DTS, LPCM and other digital audio format decoding. It is one perfect audio decoder for your DVD, Blue-Ray DVD, PS3, X360BOX, HD Player, PC etc.

Our devices offer solutions for noise, space and security concerns, data center control, information distribution, conference room presentation, school and corporate training environments.

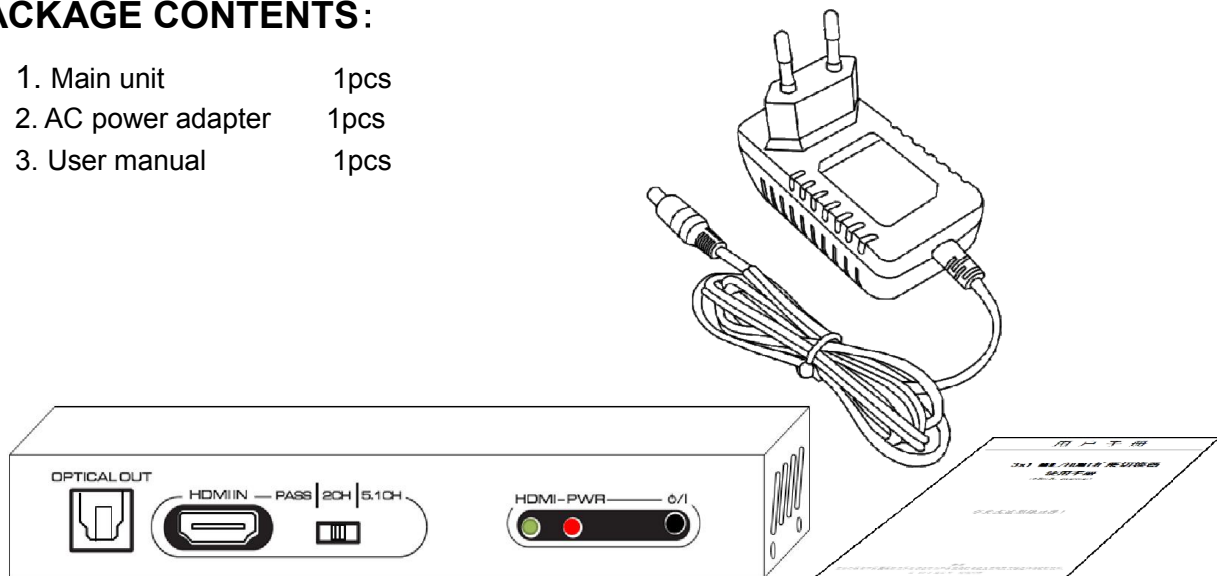
INTRODUCTION

FEATURES:

- 1X HDMI input and 1X HDMI output, can sync separation HDMI audio signal. Supports 1x SPDIF optical digital audio output, 6 channel RCA analog audio output, and 1x headphone jack output.
- Support HDMI input up to 1080P/60Hz, supports 3D (24/30fs)
- Support CEC and HDCP
- Supports 3 modes of EDID management for audio formats, can switch among built-in EDID (2CH/5.1CH) and external EDID (TV).
- Uses 24 bit/96KHz audio DSP and 24bit /192KHz DAC
- Support digital audio formats: Dolby digital (AC3), DTS, LPCM, automatic identification signal format
- Headphone amplifier output, can drive the general 3.5mm earphone
- High tone quality, low noise
- DC5V/1A power adapter

PACKAGE CONTENTS:

- 1. Main unit 1pcs
- 2. AC power adapter 1pcs
- 3. User manual 1pcs



FEATURES OF THE INTERFACE:

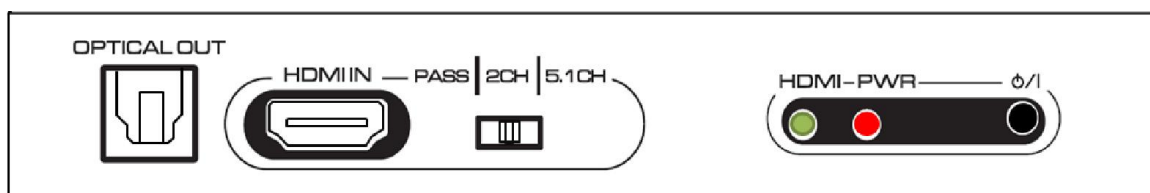


FIG.1.0 Front Panel View

OPTICAL OUT: SPDIF Optical/Toslink output

HDMI IN: HDMI input

SWITCH: Audio EDID mode switch. This switch allows users to select the source's audio EDID.

PASS: HDMI pass mode. Switch to PASS mode for the HDMI source to output audio per the EDID of connected TV or AV receiver supports up to LPCM 7.1 channels.

2CH: 2CH LPCM mode. Switch to 2CH mode for the HDMI source to output LPCM 2 channels audio per the built-in EDID. Then HDMI, SPDIF, RCA and headphones output stereo audio.

5.1CH: 5.1CH bitstream Mode. Switch to B5.1CH mode for the HDMI source to output bitstream audio per the built-in EDID. Then HDMI, SPDIF and RCA output 5.1CH audio, the headphone output audio comes from FL and FR channel

HDMI LED: HDMI OUTPUT indicator

PWR LED: POWER ON/OFF indicator

O/I: Power on/standby key

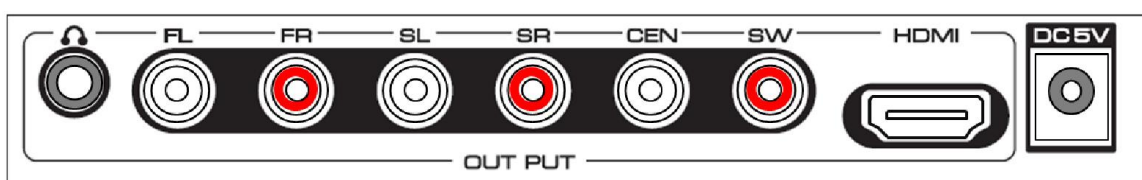


FIG.1.1 Rear Panel View



: 3.5 Stereo headphone output

FL/FR: Front L/R analog output

SL/SR: Surround L/R analog output

CEN: Center analog output

SW: Sub woof analog output

HDMI: HDMI output

DC5V: 5V DC in jack

OPERATIONG AND CONNECTION:

1. Connect one HDMI cable from a DVD/Blu-ray player into the HDMI input port of decoder.
2. Connect one HDMI cable from TV/Monitor into the HDMI output port of decoder.
3. If you need a digital audio, connect one optical fiber from digital power amplifier into the SPDIF output port of decoder.
4. If you need an analog audio, Connect six AV cables from analog power amplifier into the analog audio output ports of decoder, the channel must correspond. If you want to connect to the TV or stereo power amplifier, you only need to connect the FL/FR two channel, and switch EDID mode in 2CH.
5. If you need to use the headphone output, pls switch EDID mode in 2CH.
6. Connect 5V power supply to the decoder and inserted into the power socket.

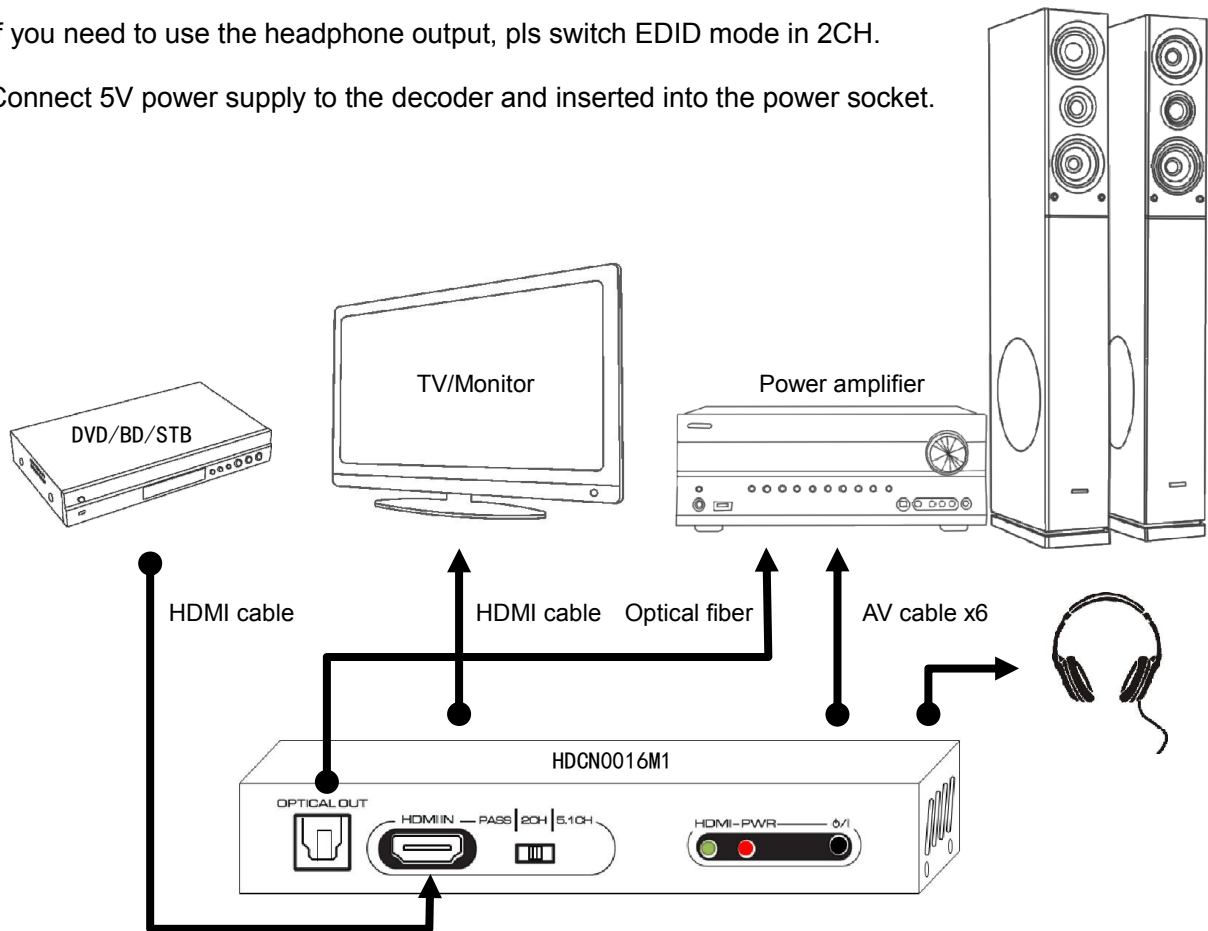


FIG.1.2 CONNECTION DIAGRAM

SPECIFICATIONS:

HDCN0016M1

HDMI resolution	up to 1080P/50/60fs (3D 24/30fs)
Support video color format	24bit/deep color 30bit,36bit
HDMI Audio Format.....	DTS-HD/Dolby-TrueHD/LPCM 2/5.1/7.1CH/DTS/Dolby-AC3/DSD
Digital audio decode format.....	Dolby Digital (AC3)/DTS/LPCM 2CH
HDMI Max bandwidth.....	225MHz
HDMI Max baud rate.....	6.75Gbps
Input/Output TMDS signal	0.5~1.5Volts p-p(TTL)
Input/Output DDC signal	5Volts p-p (TTL)
DSP sample frequency range.....	32~96 KHz
DSP Bit rate range.....	16~24 Bit
Analog output level(1kHz@0dB).....	1V RMS
SNR @ 0dB(CCIR/ARM).....	≥85dB
Distortion.....	≤0.1%
Frequency response.....	20Hz~20KHz
Headphone output power (1kHz@0dB RL=32).....	20mW
HDMI input cable distance.....	≤15m AWG26 HDMI standard cable
HDMI output cable distance.....	≤18m AWG26 HDMI standard cable
Max working current	500mA
Power adapter format Input	AC 100V~240V 50HZ/60Hz, DC5V/1A
Operating Temperature range	-10 to +55℃
Storage Temperature range.....	-20 to +60℃
Operating Humidity range	10 to 90%RH (No Condensation)
Storage Humidity range.....	5 to 95%RH (No Condensation)
Case Dimension (L x W x H)	139x64x22 (mm)
Weight	220g

Notes:

Pls use the machine as the instruction listed to keep the long use lifetime of the machine.

1. The machine should be placed at the spot far from the Damp, High-Temperature, Dusty, Erosive, and oxidative environment.
2. All parts will be free from the strong shake, hit, fall.
3. Touching the power adaptor with the wet hands is prohibited.
4. Pls hold the power adaptor head and do not pull the power cord when cut off from the socket.
5. Pls turn the power off when the machines not used for long time.
6. Pls do not open the cover and do not touch the inside parts.
7. Pls use the original factory power adaptor.

FAQ:

Before power on, pls check the connection line carefully. And make sure that all interfaces are normally connected. The common trouble shooting way shows below:

No.	Problem Description	Solutions
1	Non-Power-Connected	<ol style="list-style-type: none"> 1. Check if the power adaptor head is truly and correctly inserted the power socket. 2. Check the switch if it is in power standby status.
2	No Sound/ Abnormal sound	<ol style="list-style-type: none"> 1. Confirm the wires are intact and reliable connection. 2. Confirm the input audio format is supported formats. 3. Confirm the audio EDID mode switch setting. 4. Confirm the decoder / power amplifier / TV set volume and mute.
3	No Picture / Abnormal Picture	<ol style="list-style-type: none"> 1. Pls to make sure that the TV / amplifier is on and has been connected with the machine. 2. Check the signal source output resolution, may be set too high. 3. Device EDID read error, please reboot. 4. Check the cable quality.