

Gold Apollo GACOMP2 Transmitter (Version 2.8)

File Report Settings System Help

Transmit Report Exit

Recipients Direct PIN/ID

Recipient List: James

Selected Recipients: Tommy Chang

Message: Preset Msg Test 2000 Chars 1998

The SM8212B is a POCSAG-standard (Post Office CodeStandardization Advisory Group) signal processor LSI,which conforms to CCIR recommendation 584 concerningstandard international wireless calling codes.The SM8212B supports call messages in either tone,numerical or character outputs at signal speeds of 512,1200 or 2400 bps. The signal input stage features a built-infilter.Each of the addresses (max. 8) can be assigned to anyframe, which also makes the device configurable for manyadditional services. Each address can be independently setON/OFF.Furthermore, built-in buffer memory means decodedinformation can be fetched in sync with the microcontrollerclock, thereby reducing the microcontroller CPUtime required.Intermittent-duty method (battery saving (BS) method)control signals, compatible with PLL operation, andMolybdenum-gate CMOS structure makes possible theconstruction of low-voltage operation, low power dissipationssystem. The SM8212B is a POCSAG-standard (Post Office CodeStandardization Advisory Group) signal processor LSI,which conforms to CCIR recommendation 584 concerningstandard international wireless

Report

Index	Recipient	PINID	Dispatch Time	Sent	Send Time	Status	Message
1	Direct	1234567111	2006/1/6 下午 06:41:20	Yes	2006/1/6 下午 06:41:23	OK	0The SM8212B is a PO ...
2	Direct	1234567111	2006/1/6 下午 06:41:53	Yes	2006/1/6 下午 06:41:55	OK	1The SM8212B is a PO ...
3	Direct	1234567111	2006/1/6 下午 06:45:34	Yes	2006/1/6 下午 06:45:36	OK	0SM8212B is a POCSAG ...
4	Direct	1234567111	2006/1/6 下午 06:49:16	Yes	2006/1/6 下午 06:49:18	OK	0SM8212B is a POCSAG ...
5	Direct	1234567111	2006/1/6 下午 06:49:48	Yes	2006/1/6 下午 06:49:50	OK	1SM8212B is a POCSAG ...
6	Direct	1234567111	2006/1/6 下午 06:50:20	Yes	2006/1/6 下午 06:50:23	OK	2SM8212B is a POCSAG ...
7	Direct	1234567111	2006/1/6 下午 06:50:53	Yes	2006/1/6 下午 06:50:55	OK	3SM8212B is a POCSAG ...
8	Direct	1234567111	2006/1/6 下午 06:52:19	Yes	2006/1/6 下午 06:52:22	OK	0SM8212B is a POCSAG ...

theconstruction of low-voltage operation, low power dissipationssystem. compatible with PLL operation, andMolybdenum-gate CMOS structure makes possible theconstruction of voltage 2000 operation,

Port: COM1 Data Rate: 9600 Data Settings: 8,N,1 Ready

Gold Apollo GACOMP2 Transmitter (Version 2.8)

File Report Settings System Help

Transmit Report Exit

Recipients Direct PIN/ID

Pager PIN/ID Help...

1 If PIN/ID fields is 4 - 10 digits,it must be extended ID. Extended ID Format: CCCCCCERF
 (a) CCCCCC is a 1 to 7 digit numeric between 8 - 2097151 representing a pager capcode
 (b) E is 0,n, or N represent numeric encoding,and 1,a, or A represent alphanumeric encoding
 (c) R is RF data rate,where 5 represents 512 bps, 1 represents 1200 bps, and 2 represents 2400 bps
 (d) F is 0,1,2,3,or 4 defines the function code to be delivered.
 It is 0 represent the default value for F is 4 when the E value is alphanumeric,and 1 when the E value is numeric

Message: Preset Msg Test 2000 Chars 1998

The SM8212B is a POCSAG-standard (Post Office CodeStandardization Advisory Group) signal processor LSI,which conforms to CCIR recommendation 584 concerningstandard international wireless calling codes.The SM8212B supports call messages in either tone,numerical or character outputs at signal speeds of 512,1200 or 2400 bps. The signal input stage features a built-infilter.Each of the addresses (max. 8) can be assigned to anyframe, which also makes the device configurable for manyadditional services. Each address can be independently setON/OFF.Furthermore, built-in buffer memory means decodedinformation can be fetched in sync with the microcontrollerclock, thereby reducing the microcontroller CPUtime required.Intermittent-duty method (battery saving (BS) method)control signals, compatible with PLL operation, andMolybdenum-gate CMOS structure makes possible theconstruction of low-voltage operation, low power dissipationssystem. The SM8212B is a POCSAG-standard (Post Office CodeStandardization Advisory Group) signal processor LSI,which conforms to CCIR recommendation 584 concerningstandard international wireless

Report

Index	Recipient	PINID	Dispatch Time	Sent	Send Time	Status	Message
1	Direct	1234567111	2006/1/6 下午 06:41:20	Yes	2006/1/6 下午 06:41:23	OK	0The SM8212B is a PO ...
2	Direct	1234567111	2006/1/6 下午 06:41:53	Yes	2006/1/6 下午 06:41:55	OK	1The SM8212B is a PO ...
3	Direct	1234567111	2006/1/6 下午 06:45:34	Yes	2006/1/6 下午 06:45:36	OK	0SM8212B is a POCSAG ...
4	Direct	1234567111	2006/1/6 下午 06:49:16	Yes	2006/1/6 下午 06:49:18	OK	0SM8212B is a POCSAG ...
5	Direct	1234567111	2006/1/6 下午 06:49:48	Yes	2006/1/6 下午 06:49:50	OK	1SM8212B is a POCSAG ...
6	Direct	1234567111	2006/1/6 下午 06:50:20	Yes	2006/1/6 下午 06:50:23	OK	2SM8212B is a POCSAG ...
7	Direct	1234567111	2006/1/6 下午 06:50:53	Yes	2006/1/6 下午 06:50:55	OK	3SM8212B is a POCSAG ...
8	Direct	1234567111	2006/1/6 下午 06:52:19	Yes	2006/1/6 下午 06:52:22	OK	0SM8212B is a POCSAG ...

theconstruction of low-voltage operation, low power dissipationssystem. compatible with PLL operation, andMolybdenum-gate CMOS structure makes possible theconstruction of voltage 2000 operation,

Port: COM1 Data Rate: 9600 Data Settings: 8,N,1 Ready

Gold Apollo GACOMP2 Transmitter (Version 2.8)

File Report Settings System Help

Transmit Report Exit

Recipients Direct PIN/ID

Pager PIN/ID Help...

1 If PIN/ID fields is 4 - 10 digits, it must be extended ID. Extended ID Format: CCCCCCERF
 (a) CCCCCC is a 1 to 7 digit numeric between 8 - 2097151 representing a pager capcode
 (b) E is 0, n, or N represent numeric encoding, and 1, a, or A represent alphanumeric encoding
 (c) R is RF data rate, where 5 represents 512 bps, 1 represents 1200 bps, and 2 represents 2400 bps
 (d) F is 0, 1, 2, 3, or 4 defines the function code to be delivered.
 It is 0 represent the default value for F is 4 when the E value is alphanumeric, and 1 when the E value is numeric

Message

Preset Msg Test 2000 Chars 1998

The SM8212B is a POC SAG-standard (Post Office Code Standardization Advisory Group) signal processor LSI, which conforms to CCIR recommendation 584 concerning standard international wireless calling codes. The SM8212B supports call messages in either tone, numerical or character outputs at signal speeds of 512, 1200 or 2400 bps. The signal input stage features a built-in filter. Each of the addresses (max. 8) can be assigned to any frame, which also makes the device configurable for many additional services. Each address can be independently set ON/OFF. Furthermore, built-in buffer memory means decoded information can be fetched in sync with the microcontroller clock, thereby reducing the microcontroller CPU time required. Intermittent-duty method (battery saving (BS) method) control signals, compatible with PLL operation, and Molybdenum-gate CMOS structure makes possible the construction of low-voltage operation, low power dissipation systems. The SM8212B is a POC SAG-standard (Post Office Code Standardization Advisory Group) signal processor LSI, which conforms to CCIR recommendation 584 concerning standard international wireless calling codes. The SM8212B supports call messages in either tone, numerical or character outputs at signal speeds of 512, 1200 or 2400 bps. The signal input stage features a built-in filter. Each of the addresses (max. 8) can be assigned to any frame, which also makes the device configurable for many additional services. Each address can be independently set ON/OFF. Furthermore, built-in buffer memory means decoded information can be fetched in sync with the microcontroller clock, thereby reducing the microcontroller CPU time required. Intermittent-duty method (battery saving (BS) method) control signals, compatible with PLL operation, and Molybdenum-gate CMOS structure makes possible the construction of low-voltage operation, low power dissipation systems. compatible with PLL operation, and Molybdenum-gate CMOS structure makes possible the construction of voltage 2000 operation,

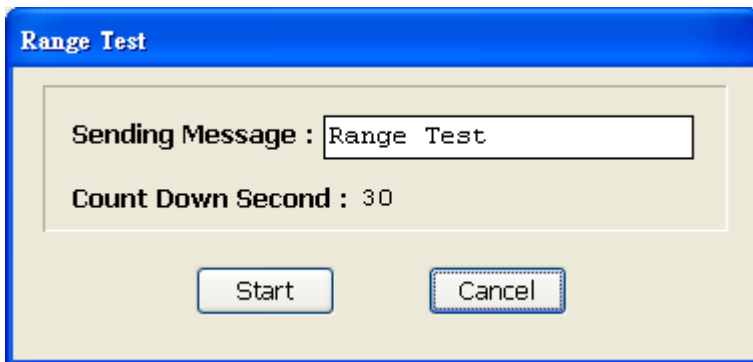
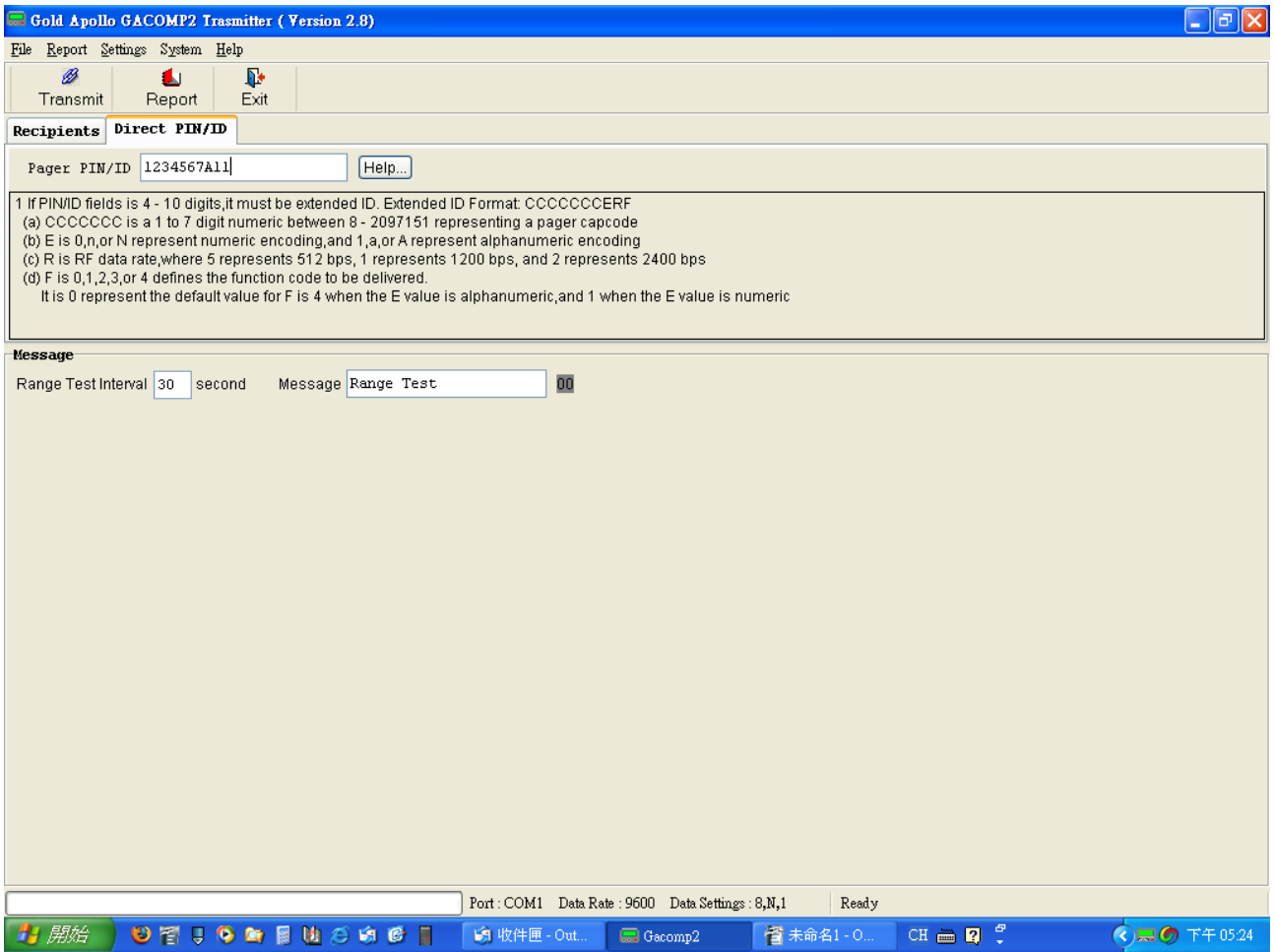
Port: COM1 Data Rate: 9600 Data Settings: 8,N,1 Ready

History

Index	Recipient	PIN/ID	Dispatch Time	Sent	Send Time	Status	Message
7108	Direct	1234567111	2006/1/9 上午 11:22:52	Yes	2006/1/9 上午 11:22:55	OK	555test 100 pager I ...
7109	Direct	1234567111	2006/1/9 上午 11:22:56	Yes	2006/1/9 上午 11:22:58	OK	555test 100 pager I ...
7110	Direct	1234567111	2006/1/9 上午 11:22:59	Yes	2006/1/9 上午 11:23:01	OK	555test 100 pager I ...
7111	Direct	1234567111	2006/1/9 上午 11:27:40	Yes	2006/1/9 上午 11:27:42	OK	The SM8212B is a POC ...
7112	Direct	1234567111	2006/1/9 上午 11:27:43	Yes	2006/1/9 上午 11:27:59	Fail	The SM8212B is a POC ...
7113	Direct	1234567111	2006/1/9 上午 11:32:01	Yes	2006/1/9 上午 11:32:04	OK	The SM8212B is a POC ...
7114	Direct	1234567111	2006/1/9 上午 11:32:04	Yes	2006/1/9 上午 11:32:23	Fail	The SM8212B is a POC ...
7115	Direct	1234567111	2006/1/9 下午 02:21:42	Yes	2006/1/9 下午 02:21:44	OK	0The SM8212B is a PO ...
7116	Direct	1234567111	2006/1/9 下午 02:21:45	Yes	2006/1/9 下午 02:22:01	Fail	1The SM8212B is a PO ...
7117	Direct	1234567111	2006/1/9 下午 02:22:32	Yes	2006/1/9 下午 02:22:32	OK	01 If PIN/ID fields ...
7118	Direct	1234567111	2006/1/9 下午 02:22:33	Yes	2006/1/9 下午 02:22:38	OK	11 If PIN/ID fields ...
7119	Direct	1234567111	2006/1/9 下午 02:22:39	Yes	2006/1/9 下午 02:22:45	OK	21 If PIN/ID fields ...
7120	Direct	0123456A11	2006/1/9 下午 04:20:43	Yes	2006/1/9 下午 04:20:45	OK	The SM8212B is a POC ...
7121	Direct	0123456A11	2006/1/9 下午 04:21:31	Yes	2006/1/9 下午 04:21:33	OK	The SM8212B is a POC ...

21 If PIN/ID fields is 4 - 10 digits, it must be extended ID. Extended ID Format: CCCCCCERF (a) CCCCCC is a 1 to 7 digit numeric between 8 - 2097151 representing a pager capcode (b) E is 0, n, or N represent numeric encoding, and 1, a, or A represent alphanumeric encoding

Delete All Close



Recipient [Close]

File (F)

Select

Recipient

Tommy Chang

Content

* Recipient Tommy Chang

First Name Tommy

Last Name Chang

Company Gold Apollo Co., Ltd.

Job Title R&D Manager

Comment

* PIN/ID 1000111A11

Maxl Chars 2000

Send First Name

PIN/ID Input

Capcode(8 ~ 2097151) 1000211

Message Encoding Alpha

Data Rate 1200 bps

Function Bit A

PIN/ID 1000211A11

